

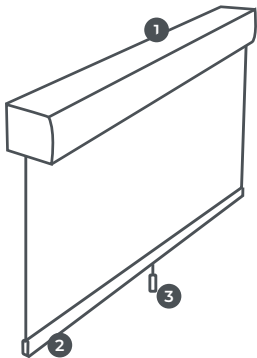
Roller Blind Fitting Instructions

Cassette Headrail - Spring Control

BLINDS CHILD SAFETY AWARENESS

Keep all cords and chains out of the reach of children. Loose cords or chains should never be tied together.

Parts Identified



- 1 Cassette
- 2 Bottom Bar
- 3 Pull Control

Additional Parts



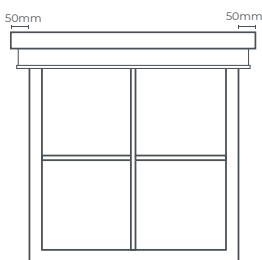
Tools Required



Fitting Instructions

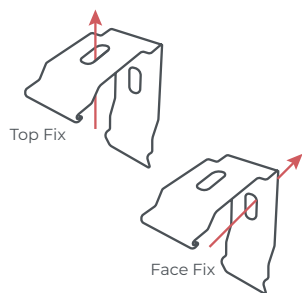
1. Measure

The brackets need to be positioned 50mm in from each side of the blind. Using your tape measure, mark these points with a pencil. Evenly space additional brackets between the two end brackets.



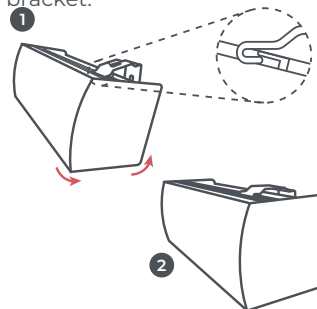
2. Fix Brackets

Choose whether you need to fit your brackets via top fix or face fix. Hold the brackets up to the pencil marks made in Step 1. Mark the relevant hole with a pencil. Drill holes and use suitable screws to fix the brackets. With a spirit level, check the brackets are level.



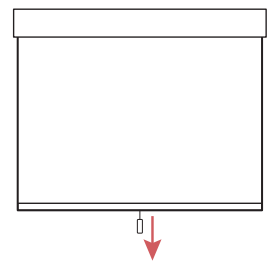
3. Hook, Tilt, Click

When the brackets are fitted, hook the ridge on the top of the cassette into the front of the brackets then push and tilt the cassette back until it clicks into the back part of the bracket.



4. Operating Your Blind

Gently pull the cord down. To lift blind downwards and release the pressure whilst holding the cord. You can stop the blind at a desired height by pulling slightly downwards.

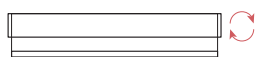


Adjusting the Spring

The spring will come pre-tensioned but you can adjust the height of your blind once it is fitted.

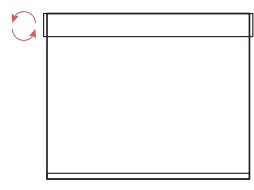
1. Set Top Height

To set the top height of the blind lower, rotate the right wheel away from you. To set the top height higher, rotate the right wheel towards you.



2. Adjust Bottom

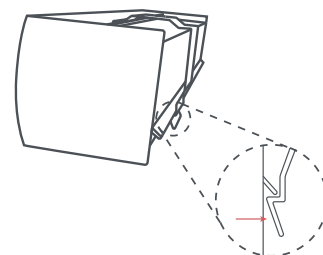
Pull the blind down to its full extent. Rotate the left wheel towards you to make the blind longer and away from you to make it shorter.



Removing the Blind

Unclip from Brackets

Press the release tab on all brackets. Tilt cassette backwards and ease out of brackets.



Cleaning Instructions

Use a dry lint free cloth to wipe over the fabric of the blind. No cords or chains make this system completely child safe. The pull cord will never be longer than 200mm.

*Before you start fitting your blind make sure the screws are suitable for the surface you are fitting into. Some surfaces will require wall plugs and different screws to the ones we provide.